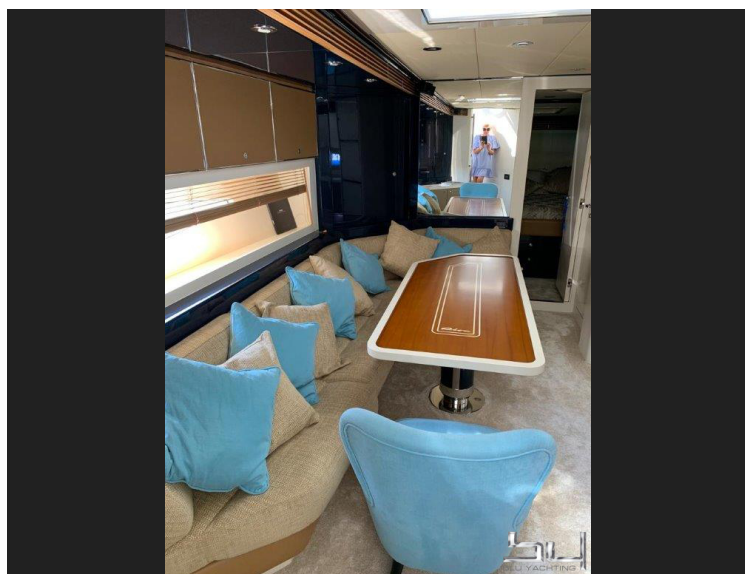


View the
yacht at
BLU
YACHTING
Aprilia Marittima (UD)



Construction year	2003
Color	-
Material	GFK
Engine	2 x MAN D2840LE (1050 PS)
Output	ca. 665 h
Transmission	Shaft
Cruising speed	32 kn
Max. speed	37 kn
Length	18,05 m (59,22 ft)
Width	4,75 m (15,58 ft)
Draft	1,45 m (4,76 ft)
Weight	30000 kg
Fuel tank	Diesel (3200 l)
Fresh water tank	600 l
Cabins	2
Beds	4
Bathrooms	2
Berth	Aprilia Marittima (UD)

~~550.000 EUR~~
430.000 EUR

EU VAT paid
+ brokerage commission

Equipment

Air condition, Heater, Generator, Sat, TV, Radio, CD, Gangway, GPS, Radar, Autopilot, Echolot, Microcommander, Teakdeck, Compass, Camper, Landconnection, Anchor winch, Pressurized water, Hot water, Bathing platform, Ceran, Dishwasher, Fridge, Wetbar, Bow thruster, Feces

Description & Specifications

Very Good

Very nice Riva 59 Mercurius with extras..

Trim tabs, sun cushions on the foredeck and afterdeck, wetbar in cockpit with icemaker, fridge, sink, BBQ, hydr. Besenzoni gangway, Ceran field with 2 plates, washing machine, crew cabin, el. WC, Raypilot autopilot, chartplotter screen integrated in radar, GPS integrated in plotter / radar, VHF radio, rudder angle indicator, diesel generator, 4x bilge pumps electric and manual, el. searchlight, stern shower (hot), boiler, air conditioning hot / cold. This yacht had a rich refit in 2017, both technically and visually covers, upholstery and a compl. Teak deck was renewed maintenance and service work was carried

out on a large scale.

